



GREEN LION



Green Lion
Turbo Pro Vacuum Cleaner

SKU: GN350WCVACBK

Table of Contents

| | |
|--------------------------------|----|
| Features | 2 |
| Safety Instructions | 2 |
| Battery Safety Instructions | 5 |
| Specifications | 7 |
| Schematic View | 7 |
| Assembly Instructions | 8 |
| A. Telescopic Tube | 8 |
| B. LED Multi-function Brush | 8 |
| C. Long Crevice Tool | 9 |
| D. 2-in-1 Combination Brush | 9 |
| E. Battery | 9 |
| Instructions for Use | 10 |
| A. Operation | 10 |
| B. Emptying the Dustbin | 11 |
| C. Battery Pack Indicator | 11 |
| Charging | 12 |
| Operating Time | 12 |
| Maintenance and Cleaning | 13 |
| A. Dustbin/Filter Maintenance | 13 |
| B. Motorized Brush Maintenance | 14 |
| Troubleshooting | 16 |
| Warranty | 17 |
| Contact Us | 17 |

Features

- 1. Converts to Handheld Vacuum:** This vacuum easily transforms into a handheld device for quick and convenient cleaning.
- 2. One-Button Dust Tank Removal:** Effortlessly empty the dust tank with a simple press of a button for hassle-free maintenance.
- 3. Three Speed Modes with LED Display:** Choose from three speed settings, displayed clearly on an LED screen, to suit different cleaning needs.
- 4. Five-Stage Filtration System with Washable Filter:** Ensures optimal air quality with a multi-layer filtration system that includes a washable filter for repeated use.
- 5. Large Dust Tank Capacity of 1.4L:** Offers extended cleaning sessions with a large 1.4-liter dust capacity, reducing the frequency of emptying.
- 6. Motorized Brush with LED Light:** Enhances cleaning efficiency with a motorized brush that illuminates dark areas for thorough cleaning.
- 7. Removable Battery Pack:** Allows for convenient replacement and charging of the battery, enhancing portability and reducing downtime.
- 8. Wall Mount for Space Saving:** Includes a wall mount feature that helps save space and keeps the vacuum easily accessible.
- 9. Brushless Motor:** Utilizes a brushless motor design for longer life and quieter operation.
- 10. Infrared Dust Sensor:** Features an advanced sensor that detects the level of dirt and adjusts suction power automatically to ensure efficient cleaning.

Safety Instructions

Attention: Please read the operating instructions carefully and pay special attention to all safety information. Failure to follow these instructions and safety guidelines may result in personal injury or damage to property. We will not be liable for any such consequences, and any resulting issues

may void the warranty.

- 1.** This appliance is not intended for use by individuals (including children) with reduced physical, sensory, or mental abilities, or by those who lack experience and knowledge, unless they are supervised or have been given instructions on the safe use of the appliance by a responsible person.
- 2.** Children must be supervised to ensure they do not play with the appliance.
- 3.** To prevent fire, explosion, or injury, check the battery pack and charger for any signs of damage before use. Do not use the vacuum if the battery pack or charger is damaged.
- 4.** If the handheld vacuum or wand is damaged, do not continue using it.
- 5.** Do not use the vacuum outdoors or on wet surfaces. Use only on dry surfaces.
- 6.** Ensure the entire unit, including the battery and charging cord, does not come into contact with any liquids and is always kept away from water or other fluids.
- 7.** Do not use the vacuum to pick up hard or sharp objects such as glass, nails, screws, or coins, which could damage the vacuum. Do not vacuum drywall dust, fireplace ash, or embers, and do not attach it to power tools for dust collection.
- 8.** Do not vacuum smoking or burning objects like hot coals, cigarette butts, or matches.
- 9.** Do not vacuum flammable or combustible materials (e.g., lighter fluid, gasoline, kerosene) or do not use the vacuum in areas where these materials may be present.
- 10.** Do not use the vacuum to pick up toxic substances such as chlorine bleach, ammonia, or drain cleaner.
- 11.** Do not operate the vacuum in confined areas where fumes from paint, paint thinner, moth-proofing products, flammable dust, or other explosive or harmful materials may be present.
- 12.** Do not vacuum any type of liquid.
- 13.** Do not immerse the vacuum in water or any other liquid.

14. Be extra cautious when using the vacuum on stairs.
15. Do not handle the vacuum or charger with wet hands.
16. Do not leave the vacuum unattended while it is switched on.
17. Always turn off the appliance before attaching or detaching any floor nozzles or other accessories.
18. Use only the original factory-recommended chargers and batteries. Other types of batteries may burst, causing injury and damage.
19. Do not incinerate appliances, even if severely damaged, as the battery pack may explode in a fire.
20. Keep your work area well-lit to ensure safety and visibility while using the vacuum.
21. Always use the vacuum on carpeted surfaces gently to avoid damaging the carpet fibers.
22. Do not place the vacuum on unstable surfaces such as chairs or tables.
23. Do not insert any objects into the vacuum's openings, and ensure they are not blocked to maintain proper airflow. Keep the vacuum free of dust, lint, and hair.
24. Children must not operate the appliance or use it as a toy. Always supervise children when they are near the appliance, and ensure they do not perform cleaning or maintenance tasks.
25. Ensure all parts, such as the roller and dustbin, are correctly attached and in place before using the vacuum.
26. Do not operate the vacuum if airflow is restricted. If the air paths or floor attachments become blocked, turn off the vacuum and remove the battery. Clear all obstructions before reinserting the battery and resuming operation.
27. Keep floor nozzles and attachments away from hair, face, bare feet, or loose clothing to prevent entanglement or injury.
28. Do not charge the battery pack at temperatures below 32°F (0°C) or above 122°F (50°C).

29. Store the appliance indoors. Avoid using or storing the vacuum at temperatures below -4°F (-20°C). Ensure the appliance is at room temperature before operating.
30. Ensure all filters are completely dry after routine cleaning.
31. Confirm that brush rollers, dustbin, and all other parts are securely in place following routine maintenance.
32. Ensure that accessories are free of blockages and keep openings away from the face and body.
33. Use only original factory-recommended filters and accessories. Utilizing non-approved items will void the warranty.
34. Regularly wash the filter every 2 weeks with water to maintain optimal performance. Failure to do so may result in reduced effectiveness and output.
35. Replace the filter every 4-6 months. Replacement filters can be purchased from the original manufacturer.

Battery Safety Instructions

1. The Battery Pack is the power source for the appliance. Do not carry the appliance with your finger on the power button, and do not charge the appliance while it is turned on.
2. Ensure the entire unit, including the battery and charging cord, is not exposed to liquids at any time. Keep the unit away from any form of liquid to prevent damage.
3. Disconnect the battery pack from the appliance before making any adjustments or troubleshooting. Remove the battery pack if the appliance will be stored unused for an extended period.
4. Only use the provided or recommended charger that comes with the original factory unit. Using an incorrect charger can pose a risk of fire when used with the battery pack.
5. Operate the appliance only with designated battery packs. Using any other type of battery pack may increase the risk of injury and fire.

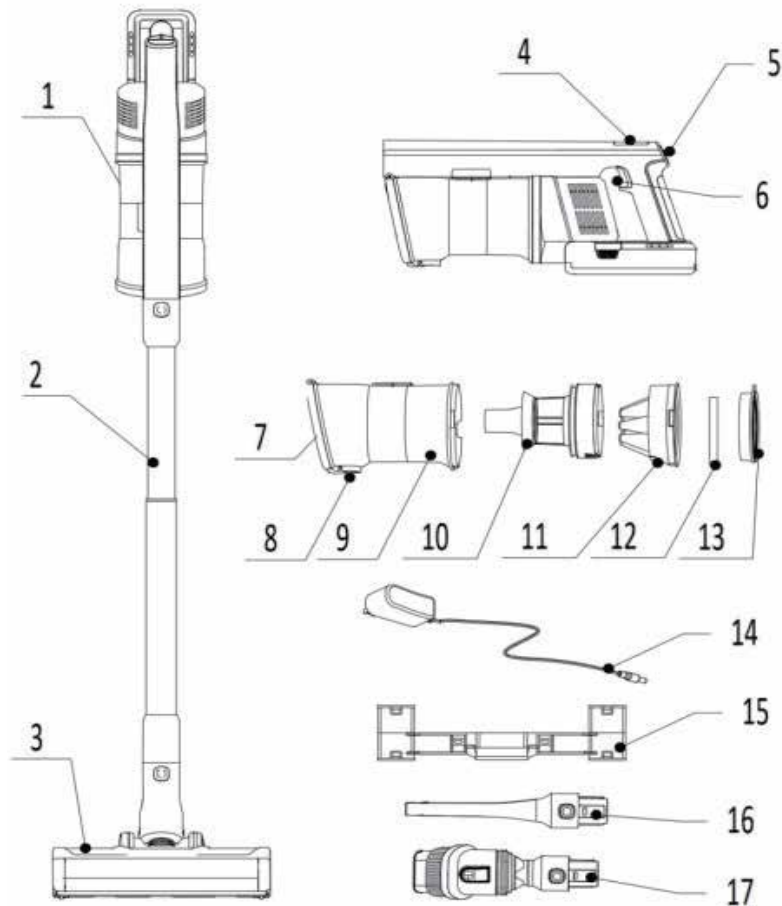
6. When not in use, store the battery pack away from metal objects such as paper clips, coins, keys, nails, or screws to prevent short-circuiting, which could lead to fire or burns.
7. In abusive conditions, liquid may be ejected from the battery pack. Avoid contact with liquids as they can cause irritation or burns. If contact with eyes occurs, flush immediately with water and seek medical attention.
8. Always store the battery pack away from heated surfaces.
9. Do not expose the battery pack or appliance to temperatures above 266°F (130°C) as high temperatures may cause explosions.
10. Adhere strictly to all charging instructions. Do not charge the battery pack or appliance outside the specified temperature range. Improper charging or charging at temperatures outside the recommended range may damage the battery and increase the risk to safety.
11. Appliances should only be serviced by qualified repair personnel using identical replacement parts to ensure safety. Do not modify or attempt to repair the appliance or battery pack yourself, except as directed in the instructions for use and care.
12. Do not store the battery pack at temperatures below -4°F (-20°C) or above 113°F (45°C) to preserve long-term battery life.
13. The battery pack should not be exposed to or submerged in water, saltwater, or any other liquids.



Specifications

| | |
|--------------------|---|
| Voltage | 29.6V (8Cells) |
| Power | 350W (BLDC) |
| Dust tank capacity | 1.4L |
| Battery type | Lithium |
| Battery capacity | 2200mAh |
| Operating time | 16min (High speed)/ 22min (Normal speed)/ 45min (ECO speed) |
| Vacuum | >28Kpa |
| Charging time | 4.5H |
| Noise | <70db |
| Certificate | CE/CB/ROHS/FCC |

Schematic View



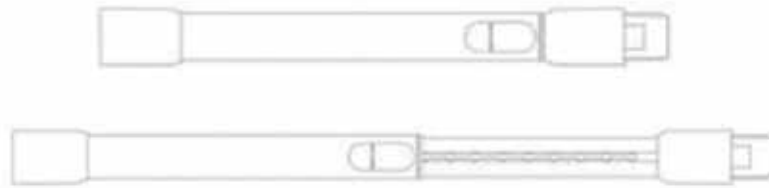
1. Hand Held Vacuum
2. Telescopic Tube
3. Multi-function Power Brush
4. Screen
5. Function Button
6. Switch Button
7. Dustbin Cover
8. Dustbin Cleaning Button
9. Dustbin

10. Filter Frame
11. Cyclone Frame
12. Sponge
13. HEPA Filter
14. Power Adapter
15. Storage Supporting Frame
16. Long Crevice Tool
17. 2 in 1 Combination Brush

Assembly Instructions

A. Telescopic Tube

To adjust the telescopic tube to your desired length for cleaning, press down on the black tab located at the bottom of the tube and then pull upward. Adjust until it meets your specific cleaning needs.



B. LED Multi-function Brush

1. The built-in LED lights provide bright and focused illumination, enhancing the powerful suction head's ability to capture dust, dirt, and debris that are difficult to see. The wide suction head is ideal for daily cleaning tasks, such as under the couch and in the kitchen.

2. To attach the LED Multi-function Power Brush to the Telescopic Tube, press it into the tube until you hear a click, indicating it is securely in place. Then, insert the top of the tube into the handheld vacuum, pressing until it clicks into place securely.



C. Long Crevice Tool

1. The narrow design of the Long Crevice Tool allows for precise and efficient cleaning in tight spaces, making it ideal for hard-to-reach areas. It is particularly useful for cleaning areas such as between sofa cushions, along baseboards, inside car interiors, window corners, and around other household appliances.

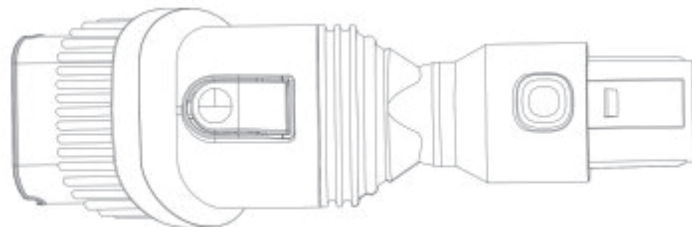
2. To attach the Long Crevice Tool, insert it into the open end of the handheld vacuum until you hear a click, indicating it is securely in place.



D. 2-in-1 Combination Brush

1. The 2-in-1 Combination Brush features a soft bristle design to effectively remove dust and debris from various delicate fabrics. This attachment is ideal for cleaning lint, pet hair, or dust around couches, curtains, carpets, and upholstered car seats. The brush is extendable, making it perfect for reaching high and hard-to-access areas.

2. To attach the 2-in-1 Combination Brush, insert it into the open end of the handheld vacuum until you hear a click, ensuring it is securely in place.



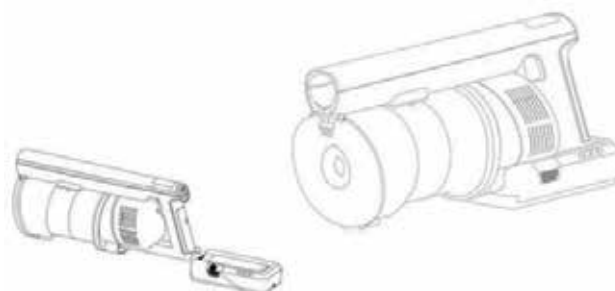
E. Battery

Step 1: Releasing the Battery Pack

Press the battery pack release button and then pull the battery pack out.

Step 2: Inserting the Battery Pack

Slide the battery pack into the slot at the bottom of the main body. The battery pack will click into place when it is properly fitted.



Battery Pack Release Button

Instructions for Use

Warning

1. Keep away from children.
2. Keep away from any liquids or direct sunlight.

Note:

Before first use, charge the product and ensure the battery and unit are kept away from direct sunlight or hot areas. Charge or store it in an environment between 4°C (39.2°F) and 40°C (104°F).

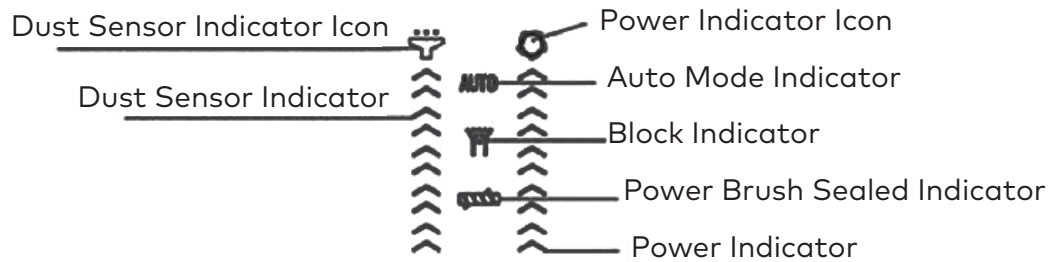
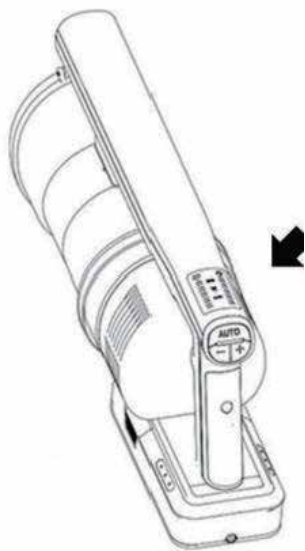
If left unused for 2 hours, allow the battery to return to room temperature before charging.

A. Operation

1. Press the switch button once to start the vacuum. The power indicator will light up.
2. Use the function button "-" or "+" to switch between modes:
MIN Mode: The power indicator will display one light.
MID Mode: The power indicator will display three lights.
MAX Mode: The power indicator will display five lights.
3. Press the "Auto" function button to activate the automatic cleaning mode. The speed will adjust based on the amount of dust detected. The auto mode indicator, power indicator, dust sensor indicator, and other relevant icons will light up.

Note

1. If the dirt cup is full or the filter requires cleaning, the black indicator will light up and flash. Turn off the machine to clean the dirt cup or filter.
2. If the power brush is blocked or tangled with hair or fibers, the power brush blockage indicator will light up and flash. Turn off the machine to clean and maintain the power brush.



B. Emptying the Dustbin

When you are finished using the vacuum cleaner, press the dustbin release button located on the side of the dustbin to open it. Then, empty the dust into a trash container.



Dustbin Cleaning Button

C. Battery Pack Indicator

1. Remove the battery pack from the handheld vacuum.
2. Plug the power adapter into a wall socket. Place the charging cord on a dry, flat surface, away from liquids and direct sunlight, and connect it to the battery pack.

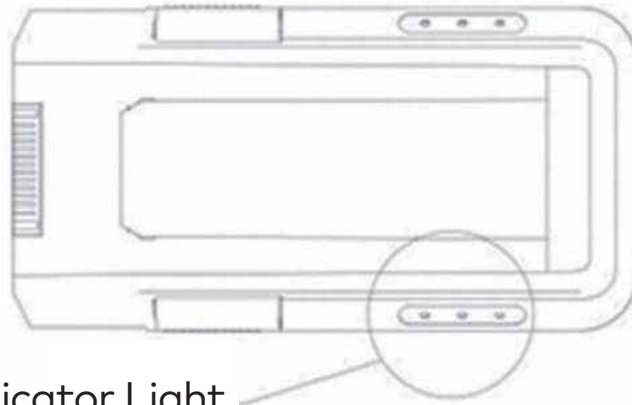
Note: To prevent accidental trips, store the appliance in a safe location near the wall while charging.

Important: If the vacuum has recently been used and is warm, allow the battery pack to cool down before charging.

Charging

1. The battery fully charges in approximately 4.5 hours.
2. When one solid white light and two blinking white lights are visible, the battery is 25 % charged.
3. When two solid white lights and one blinking white light are visible, the battery is 75 % charged.
4. When all lights are solid white, the battery is fully charged.

Maintenance Tips: To preserve battery life when not in use, store the device in a cool, dry location with the battery charged to 50 %. This practice helps maintain optimal battery health.



Charging Indicator Light

Operating Time

1. The device operates for approximately 45 minutes in ECO mode and about 16 minutes in MAX mode.
2. A single blinking white light indicates that the battery is nearly depleted and requires recharging.
3. One solid white light signifies that 25 % of battery power remains.
4. Two solid white lights indicate that the battery is 75 % charged.
5. When all lights display as solid white, the battery is fully charged. These lights will turn off automatically within one minute.

Note: If only one battery indicator flashes, it signals that the device is out of power and needs to be charged.

Maintenance and Cleaning

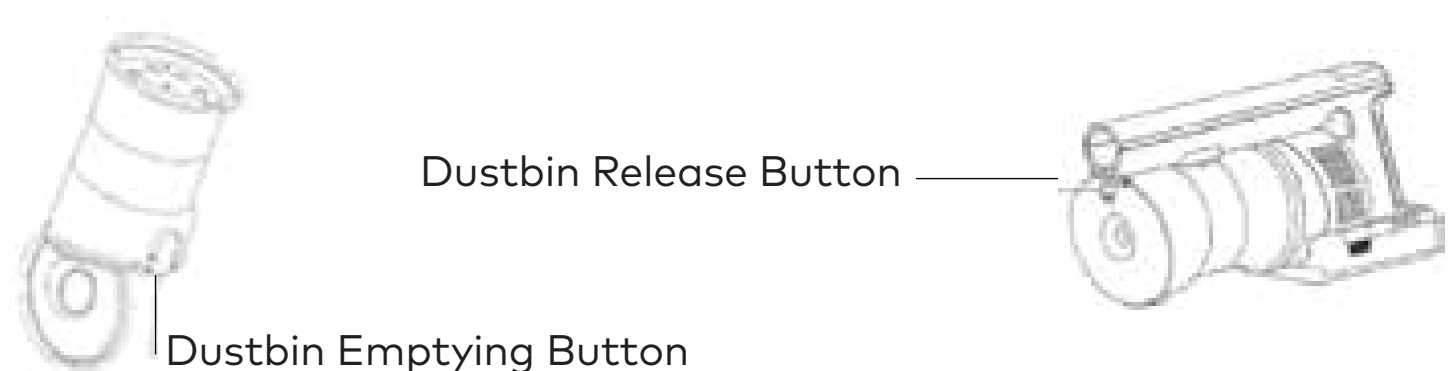
For optimal performance, wash the filter every two weeks using water. Neglecting this maintenance may lead to decreased efficiency and reduced output. The filters should be replaced every four to six months.

A. Dustbin/Filter Maintenance

Step 1: Press down on the Dustbin release button, located on the dustbin cover. Simultaneously, pull the Dustbin away from the body of the handheld vacuum.

Step 2: Press down on the rose gold dustbin emptying button, situated on the transparent bin, to open the Dustbin cover and release all contained waste.

Step 3: Rotate to open the Dustbin Cover as illustrated below.



Step 4: Remove the HEPA filter. Next, lift the cyclone frame (refer to Image 1). Ensure that the flat side of the cyclone frame aligns with the flat side of the filter frame, both marked by lock and unlock icons (as depicted in Image 2). The alignment marker on the cyclone frame should match the 'unlock' icon at the top of the filter frame.



image 1

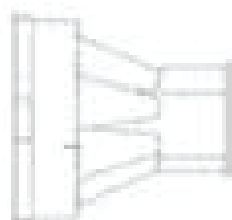
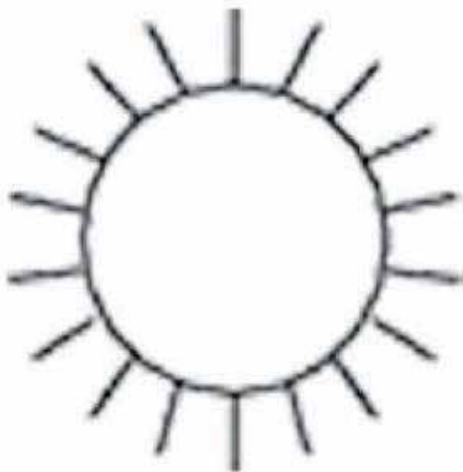


image 2

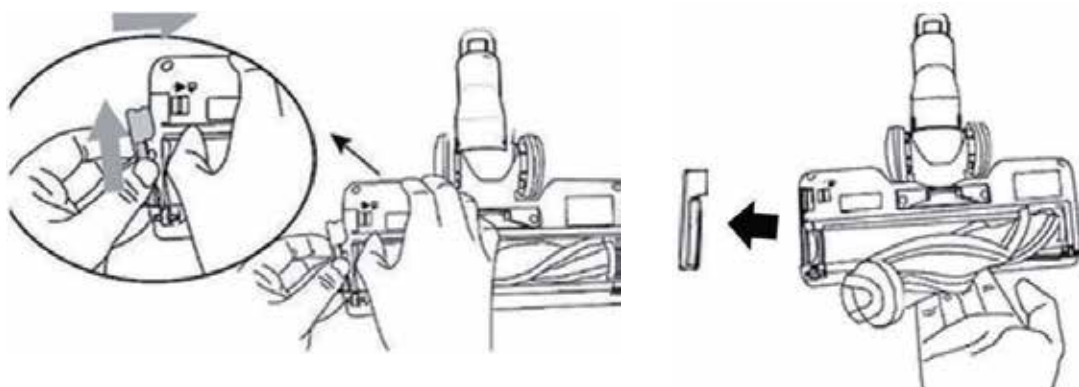
Step 5: Clean the filter frame, sponge HEPA filter, and dustbin using room temperature water. Gently massage all three components with your hands under the water to ensure thorough cleaning.

Step 6: Thoroughly dry the HEPA filter and the sponge filter frame before reinserting them into the dustbin. Ensure both the dustbin and filter frame are completely air-dried prior to reassembly. Once dry, reattach the filter to the cyclone frame.

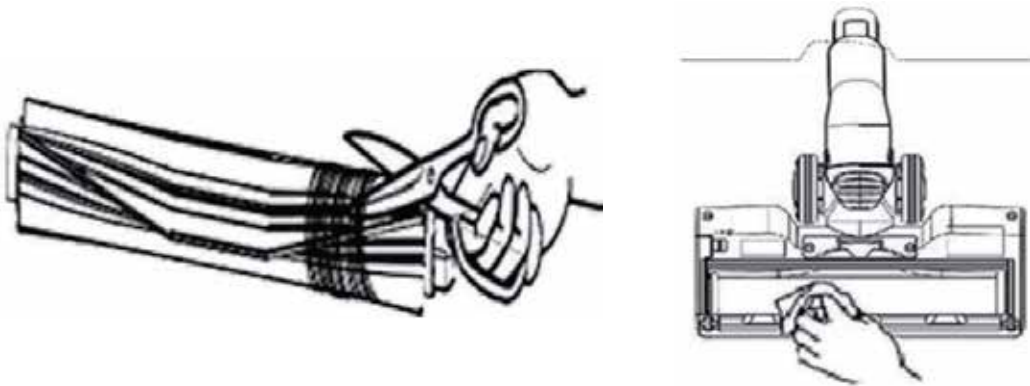


B. Motorized Brush Maintenance

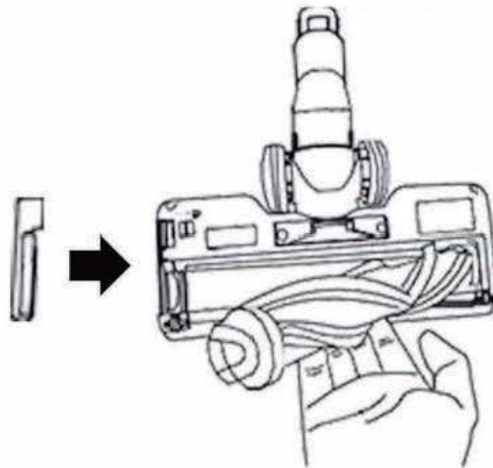
Step 1: Detach the Power Motorized Brush from the chrome pole and rotate it to face you with the flat side forward. On the bottom right corner, press the red tab to the left, lift the brush latch on the right, and then remove the brush frame from the brush window. Refer to the image below for visual guidance.



Step 2: Carefully remove any hair and debris entangled around the roller brush using scissors. Then, gently wipe the transparent brush window using a dry cloth to clean it.



Step 3: After completing the cleaning process, reinsert the rolling brush into the LED Multi-function Power Brush window. The roller brush features two distinct markings: one side displays a star-shaped hole and the other a U-shaped hole. Align the star-shaped side (side 1) with the right-hand side of the Multi-function Power Brush window, and the U-shaped side (side 2) with the left-hand side. After correctly aligning the brush, secure it by pressing down on the brush frame until it locks into place.



Troubleshooting

| Problem | Possible Causes | Solutions |
|--------------------------------|---|--|
| Debris Not Collected | <ol style="list-style-type: none"> 1. Dustbin is full. 2. Filters are clogged or dirty. 3. Filters are non-functional. | <ol style="list-style-type: none"> 1. Empty the dustbin 2. Clean the filters 3. Replace worn filters |
| Brush roller not spinning | The roller brush clogged by hair or fibers. | Clean the roller brush |
| Insufficient Suction | <ol style="list-style-type: none"> 1. Dustbin is not securely fixed in its place. 2. Filters are clogged or dirty. 3. Dustbin has not been installed properly. 4. battery level is low. 5. Nozzle's dirt passage is clogged. | <ol style="list-style-type: none"> 1. Reinstall the dustbin and ensure the lid is securely closed 2. Clean the filters 3. Reinstall the dustbin 4. Fully charge the battery 5. Disconnect the nozzle to remove debris |
| Unexpected Shutdown | <ol style="list-style-type: none"> 1. Dustbin is full. 2. Filters are clogged or dirty. 3. Vacuum overheats. | <ol style="list-style-type: none"> 1. Empty the dustbin. 2. Clean the filters. 3. Allow the vacuum to cool down, then retry. |
| Vacuum does not turn on or off | <ol style="list-style-type: none"> 1. Battery is low. 2. Vacuum overheats. | <ol style="list-style-type: none"> 1. Fully charge the battery. 2. Allow the vacuum to cool down, then retry operation. |
| Short operating time | <ol style="list-style-type: none"> 1. Power is low. 2. Filters are clogged or dirty. | <ol style="list-style-type: none"> 1. Fully charge the battery. 2. Check if filters are clogged or dirty. |

Warranty

Products that you buy directly from our **Green Lion** website or shop come with a 24-month warranty.

When you buy **Green Lion** products from any of our approved sellers, you only get a 12-month warranty. If you want to extend this warranty, go to our website at <https://www.greenlion.net/warranty> and fill out the form with your information. Don't forget to upload a picture of the product too. After we've checked and accepted your request, we'll send you an email to confirm that your product's warranty has been extended.

For more info, please check:

<https://www.greenlion.net/warranty>

Contact Us

If you have any questions about this Privacy Policy, please contact us at:

Website: <https://www.greenlion.net/>

Sales: sales@greenlion.net

Service Support: Support@greenlion.net

Telegram: [@greenlion_global](https://www.instagram.com/greenlion_global)

Instagram: [@greenlion_global](https://www.instagram.com/greenlion_global)